



AS-Interface Master News (04/2023)

ASi-5/ASi-3 Address Programming Device – continuously improved thanks to constant updates

Benefit from the continuous further development of the ASi-5/ASi-3 Address Programming Device ([BW4925](#)). New functions are regularly available via free field updates – currently, for example, extended setting and diagnostic options as well as the very clear display menu. Of course, this also applies to all devices already in use.

The modern ASi-5/ASi-3 Address Programming Device for all ASi generations and the [Bihl+Wiedemann Software Suite](#) are a **powerful combination** in any case: This way, you combine the advantages of decentralized addressing with those of central planning and parameterization when commissioning your ASi system.

The most important new functions of the ASi-5/ASi-3 Address Programming Device

- **Read and write** - parameters and ID1 ASi-3, IO data ASi-3 and ASi-5, profiles ASi-5 (profiles available in the module selectable)
- **Reset of ASi-5 nodes** – for modules like original from the factory
- **New, clearer display menu** – oriented on the familiar look-and-feel of our software suites, especially on the online bus information
- **Plain text error messages** – here you can choose between different languages
- **Unambiguous icons** – a crescent moon visualizes the stand-by mode, for example
- **Display of operating/input functions** – this eliminates the need to look through the manual

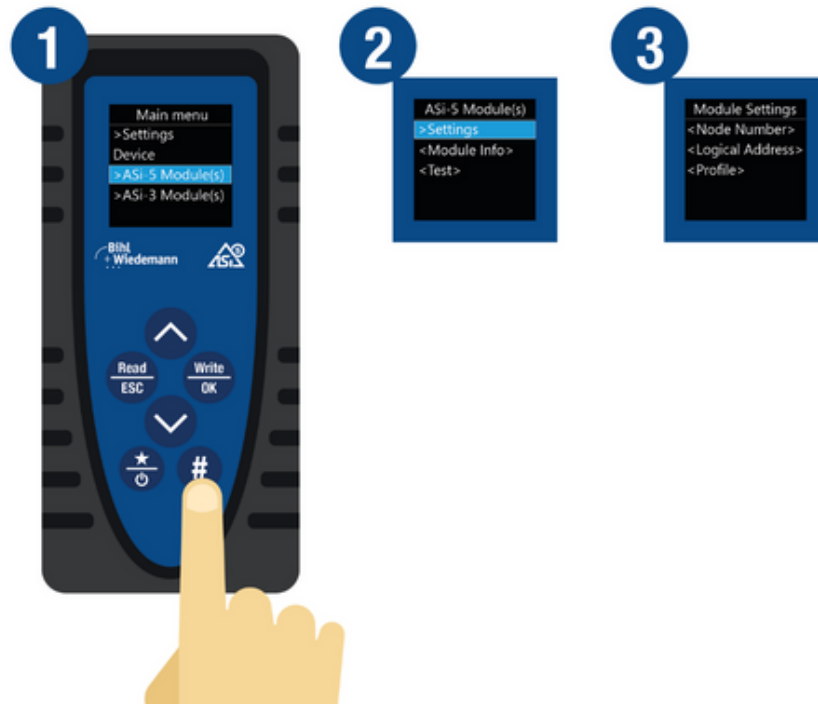


Fig.: The # key is used to access the new display menu. Here, the extended diagnostic and setting functions are available.

The proven advantages of the ASi-5/ASi-3 Address Programming Device

- **For all ASi generations** – with a uniform workflow, you can easily and safely commission all ASi-3 and [ASi-5](#) modules. [BW4925](#) is also definitely the most powerful ASi-3 addressing device.
- **All Bihl+Wiedemann PC programs usable** – by connecting the addressing device to a PC via the USB-C interface, you can use it together with the Bihl+Wiedemann Suite.
- **User-friendly** – thanks to six robust buttons and an OLED color display, you can easily operate the addressing device. Firmware updates in the field are made easy.
- **Always ready for use** – a modern energy storage (supercapacitor) provides long life and enables fast charging with simultaneous use (full charge in approx. 30 min, sufficient for ≥ 120 read/write operations).
- **Large scope of delivery** – the most important [ASi addressing cables](#) ([BW4711](#), [BW4712](#), [BW4731](#), [BW4732](#)) are included as well as the power supply via charging cable USB-A to USB-C ([BW4713](#)).

For further information please visit our website.

[More information](#) →

Further questions about our products and solutions?

We would be happy [to assist you](#).



[Abmeldelink](#) | [unsubscribe](#) | [Lien de désinscription](#) | [Anular suscripción](#) | [Link di cancellazione](#)
[Impressum](#) | [Privacy Policy](#)