

Diagnosics With Bihl+Wiedemann – as Easy and User-Friendly as ASi

Find out on our website how to **conveniently commission ASi networks, reliably maintain them and troubleshoot errors** - that seldom occur with ASi - **quickly and easily**. For this purpose, we offer **numerous hardware and software tools** that we continuously optimize for you.

Simple Commissioning

Read here how our intuitive software **guides you step by step through commissioning** and how you can **configure all our products simply with a click of the mouse**. For this purpose, we provide you the improved ASi Control Tools360 (for standard hardware) and ASIMON360 (for functionally safe applications).

Reliable Maintenance

Discover here our diagnostic tools that help you **continuously check the actual state** of your ASi network. They enable you, for example, to react at an early stage to deteriorating transfer characteristics and to take preventive measures as part of **predictive maintenance**.

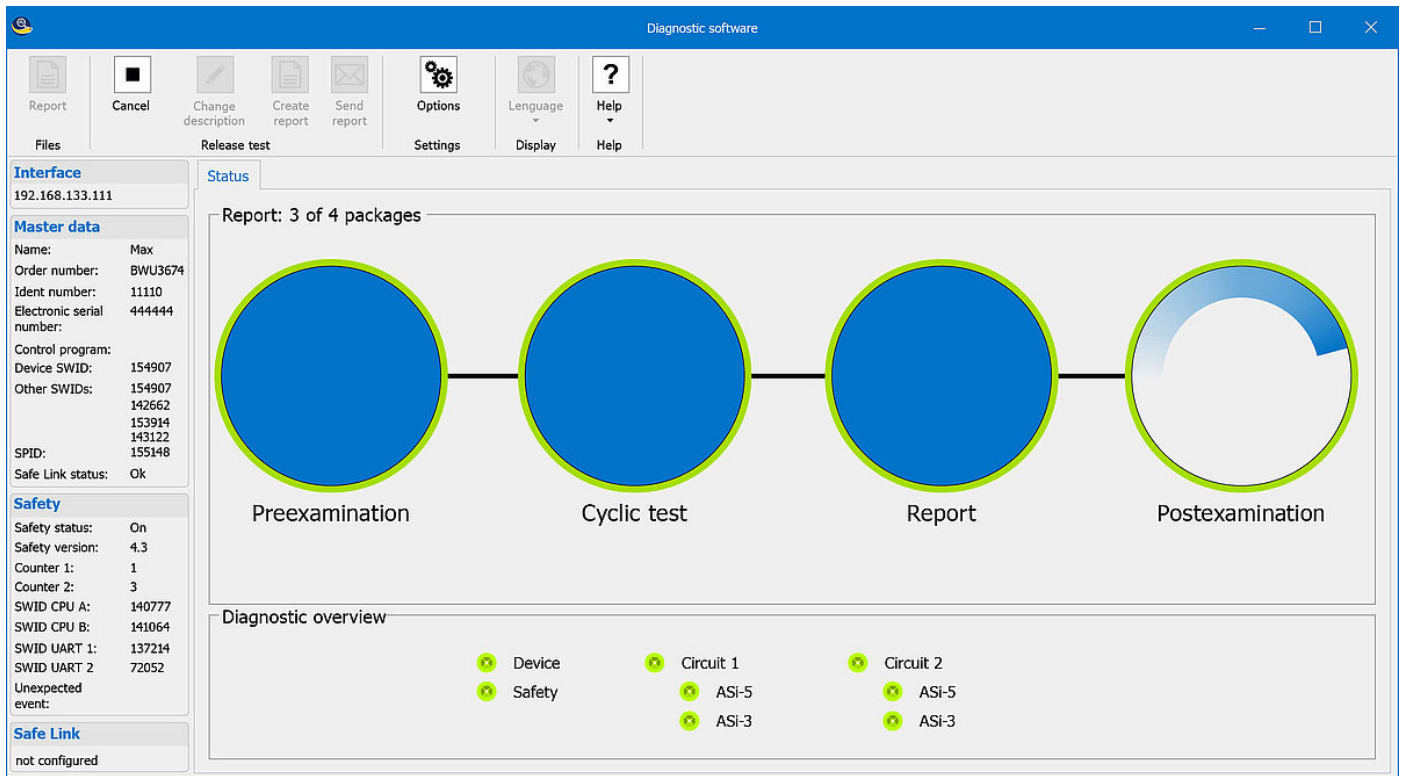


Fig.: The diagnostic software is included in the Bihl+Wiedemann Suite (BW2902) and in the Bihl+Wiedemann Safety Suite (BW2916, BW3065).

Rapid Troubleshooting

Here you will discover, among other things, **five steps for troubleshooting and error rectification in ASI networks**. You will see how our diagnostic software **turns any commercially available PC into an ASI diagnostic device**. A further plus point of the diagnostic software: In addition to a **precise description of the error**, it always provides you **with concrete suggestions for solutions**.

Questions about our products and solutions?

We would be happy to assist you.