

ASi Master

Suitable for SAP4, SAP5, A²SI and ASI4U

For programming, developing and tests of ASi module

ASi specification 3.0



Article no. BWU1728 with Master RS 232

The ASi Function and EMC-Test Master with RS 232 interface can be operated in 3 different modes:

1. As a standard ASi Master according to specification 3.0.
2. As a tool for programming of the ASi module ICs SAP4, SAP5, A²SI and ASI4U. This can be done with the help of Windows programs.

3. As a means to perform function and EMC tests which are necessary for every development of an ASi module (EMC test mode).

The ASi Function and EMC-Test Master is used among others for the ASi certification in Leipzig for release and test of ASi modules.

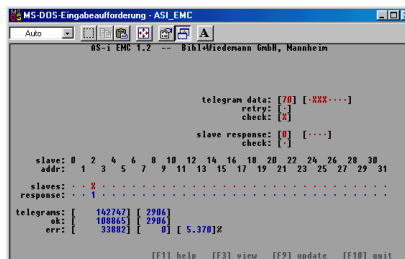
Graphical display	Art. no. BWU1728
Operating current	Master power supply approx. 200 mA out of ASi circuit
Operating voltage	ASi voltage 30 V DC
Baud rates	19200 Baud
Serial interface	RS 232
ASi cycle time	150 µs*(number of nodes + 2)
Displays	
LCD	displaying node addresses, error messages
LED green (power)	power on
LED green (ser active)	serial interface active
LED red (config error)	configuration error
LED green (U ASi)	ASi voltage OK
LED green (ASi active)	ASi normal operation active
LED green (prg enable)	automatic address programming enabled
LED yellow (prj mode)	the master in configuration mode
Buttons	4
Voltage of insulation	≥ 500 V
EMC directions	EN 61000-6-2, EN 61000-6-4
Ambient operating temperature	0°C ... +55°C
Storage temperature	-25°C ... +85°C
Housing	ASi master housing in stainless steel
Dimensions (L, W, H)	120 mm, 75 mm, 83 mm
Protection category (DIN 40050)	IP20
Tolerable loading referring to impacts and vibrations	according to EN 61 131-2
Weight	460 g

The EMC-Test Mode

It is possible to put the Master into a state that is not ASi compliant. This option can be useful for specific tests on ASi under laboratory conditions (e. g. tests with bursts on the lines or tests with very long wires). By putting the ASi Master into the EMC Test Mode it becomes an ASi test set-up for experts.

In the test mode, the list of addressed modules and the telegrams for contacting these modules are given by the host. Also, it is possible to decide from within the host whether faulty answered telegrams from the ASi Master may be repeated or not (Note: in regular ASi operation, data telegrams can be repeated one time). As above, there are two error counters. However, in this mode the first one counts all telegrams while the second counts all faulty telegrams.

The **ASi EMC.EXE** program is designed for the operation of the ASi Master in the EMC test mode. This program is also delivered as program for Windows.



Individual software:

It is, of course, possible to operate the ASi Master from other hosts with individual software. The necessary telegrams are described in the manual.

Scope of delivery:

- The ASi Function and EMC-Test Master with RS 232, power supply A
- Windows program ASi_EMV.EXE for EMV test mode
- Windows programs for programming of SAP4, SAP5, A²SI and ASI4U
- Software ASi Control Tools with serial cable for ASi master in stainless steel (art. no. BW1602)
- A DLL-driver for the programming of the A²SI- and SAP4-ASIC can be ordered separately on request (art. no. BW1356)

AS-Interface Master/Gateways

AS-Interface Modules/Slaves

Safety components

Bus couplers/ Master Simulators

Accessories

Software